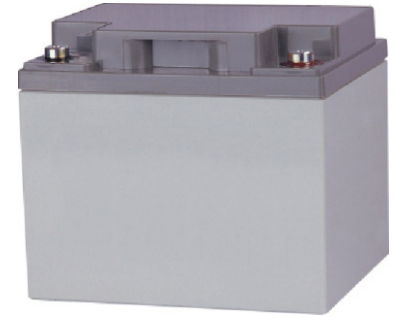


B12V40A



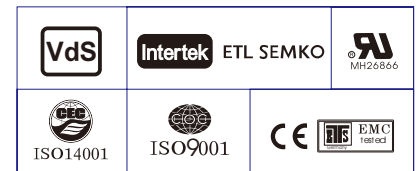
Specification	
Nominal Voltage	12V
Watts(15min Rated)	135 Watts/cell at 1.67V/cell @25°C/77°F
Dimension	Length 197±2mm (7.75 inches)
	Width 165±2mm (6.50 inches)
	Container Height 170±2mm (6.69inches)
	Total Height (with Terminal) 170±2mm (6.69inches)
Approx Weight	Approx 11.4 kg (25.14lbs)
Terminal	T6
Container Material	ABS
Rated Capacity	38.0 AH/3.80A (10hr, 1.80V/cell, 25°C/77°F)
	36.56 AH/4.57A (8hr, 1.80V/cell, 25°C/77°F)
	34.45 AH/6.89A (5hr, 1.75V/cell, 25°C/77°F)
	31.5AH/10.5A (3hr, 1.75V/cell, 25°C/77°F)
	27.9AH/27.9A (1hr, 1.60V/cell, 25°C/77°F)
Max. Discharge Current	550A (5s)
Internal Resistance	Approx 10.0mΩ
Operating Temp. Range	Discharge : -15~50°C (5~122°F)
	Charge : 0~40°C (32~104°F)
	Storage : -15~40°C (5~104°F)
Nominal Operating Temp. Range	25±3°C (77±5°F)
Cycle Use	Initial Charging Current less than 11.4A. Voltage 14.4V~15.0V at 25°C(77°F)Temp. Coefficient -30mV/°C
	No limit on Initial Charging Current Voltage 13.5V~13.8V at 25°C(77°F)Temp. Coefficient -20mV/°C
Standby Use	40°C (104°F) 103% 25°C (77°F) 100% 0°C (32°F) 86%
Capacity affected by Temperature	
Self Discharge	series batteries may be stored for up to 9 months at 25°C(77°F) and then a freshening charge is required. For higher temperatures the time interval will be shorter.

Applications

- ◆ UPS (High rate)
- ◆ Emergency power supply
- ◆ Banks & Financial Markets
- ◆ Hospitals & Testing Laboratories
- ◆ Industrial Process Control Facilities
- ◆ Date & Network Operations Centers

Compliant Standards

- ◆ IEC60896-21/22:2004
- ◆ BS 6290 Part 4



Constant Current Discharge (Amperes) at 25 °C (77°F)

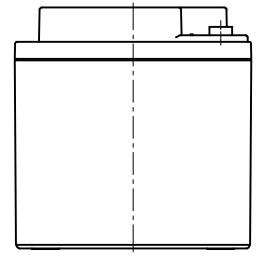
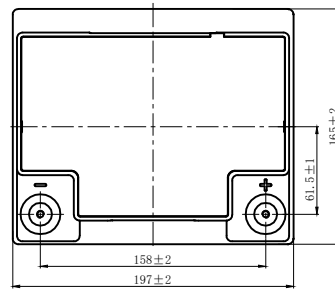
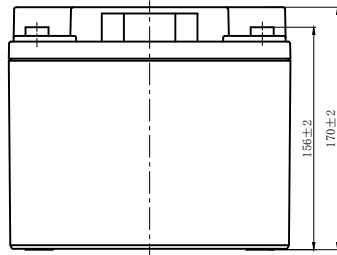
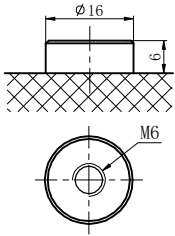
F.V/Time	5min	10min	15min	20min	25min	30min	45min	1h	1.5h	2h	3h	4h	5h	8h	10h
1.85V/cell	76.8	59.2	52.4	48.3	43.9	40.0	30.0	24.3	17.6	14.1	9.91	7.84	6.52	4.45	3.72
1.80V/cell	88.2	65.3	57.5	52.1	46.6	42.2	31.1	25.0	18.2	14.5	10.2	8.08	6.71	4.57	3.80
1.75V/cell	100.3	73.3	62.4	55.2	49.2	44.0	32.3	25.8	18.7	14.8	10.5	8.28	6.89	4.67	3.87
1.70V/cell	110.4	79.5	66.6	58.8	52.0	46.2	33.4	26.5	19.1	15.2	10.7	8.49	7.04	4.75	3.94
1.67V/cell	122.1	86.5	71.2	61.5	54.2	48.2	34.5	27.3	19.5	15.5	10.9	8.62	7.16	4.83	4.00
1.60V/cell	134.3	93.4	75.2	64.7	56.8	50.1	35.5	27.9	19.9	15.7	11.1	8.80	7.28	4.93	4.08

Constant Power Discharge (Watts) at 25 °C (77°F)

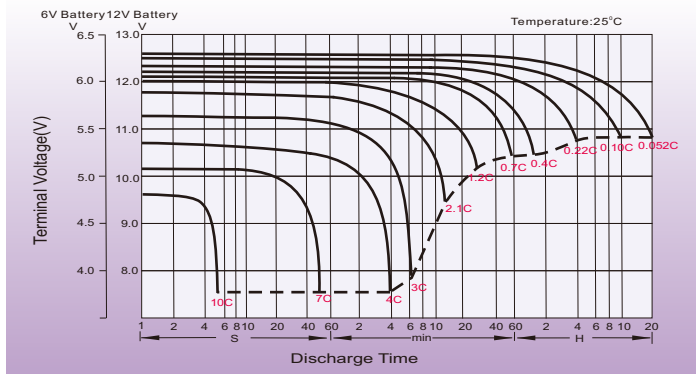
F.V/Time	5min	10min	15min	20min	25min	30min	45min	1h	1.5h	2h	3h	4h	5h	8h	10h
1.85V/cell	149.5	115.9	103.0	95.5	87.0	79.5	59.9	48.7	35.3	28.3	20.0	15.9	13.3	9.11	7.66
1.80V/cell	169.7	126.5	111.8	102.0	91.6	83.1	61.6	49.8	36.2	29.0	20.5	16.3	13.6	9.32	7.78
1.75V/cell	191.1	140.6	120.6	107.2	95.8	85.9	63.5	51.0	37.0	29.4	21.0	16.6	13.8	9.46	7.88
1.70V/cell	208.0	150.8	127.0	112.9	100.1	89.3	65.0	51.9	37.6	29.9	21.3	16.9	14.1	9.55	7.96
1.67V/cell	228.2	163.0	135.0	117.3	103.9	92.6	66.7	53.2	38.2	30.2	21.5	17.1	14.2	9.67	8.05
1.60V/cell	248.1	174.0	141.1	122.3	107.7	95.4	68.1	53.9	38.6	30.6	21.7	17.3	14.3	9.78	8.13

Dimensions

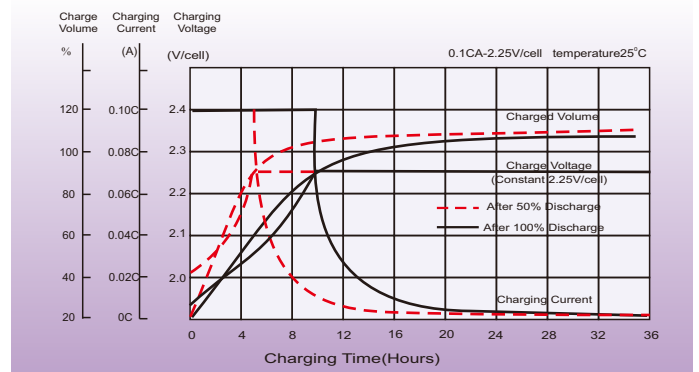
T6 Terminal



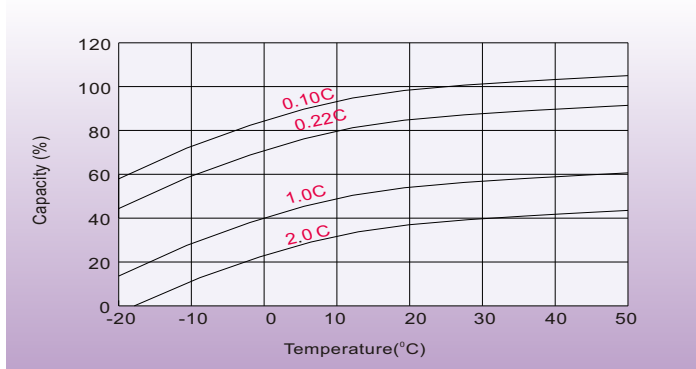
Discharge Characteristics



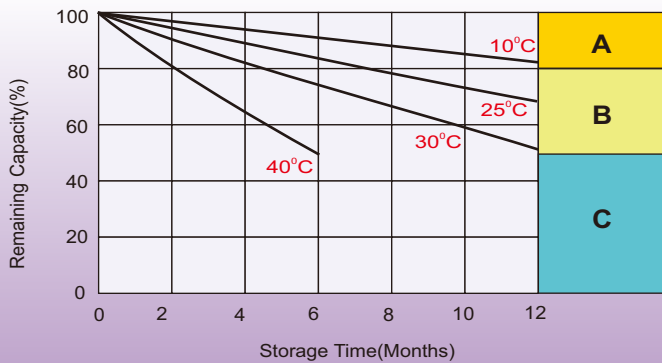
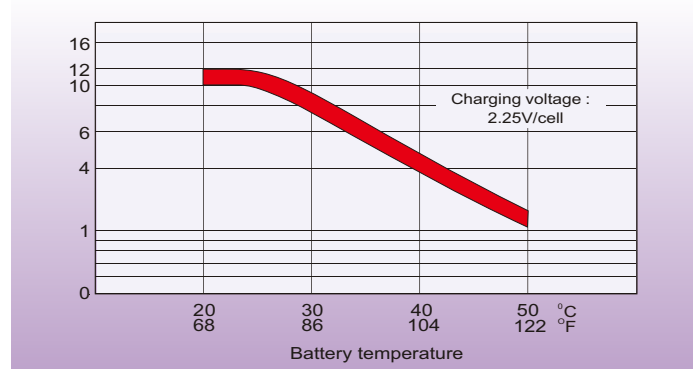
Float Charging Characteristics



Temperature Effects in Relation to Battery Capacity



Effect of Temperature on Long Term Float Life



Self Discharge Characteristics

- A** No supplementary charge required
(Carry out supplementary charge before use if 100% capacity is required.)
- B** Supplementary charge required before use. Optional charging way as below:
 1. Charged for above 3 days at limited current 0.25CA and constant voltage 2.25V/cell.
 2. Charged for above 20hours at limited current 0.25CA and constant voltage 2.45V/cell.
 3. Charged for 8-10hours at limited current 0.05CA.
- C** Supplementary charge may often fail to recover the capacity.
The battery should never be left standing till this is reached.